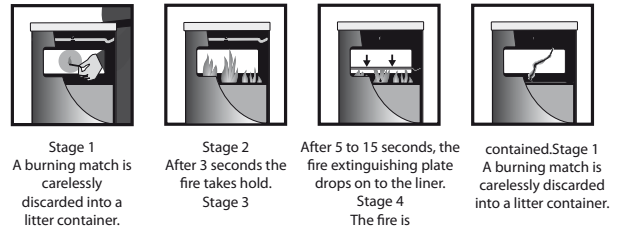
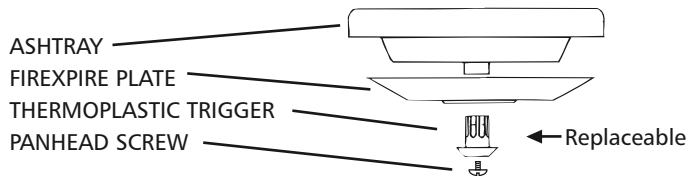


# FIREXPIRE® RE-ASSEMBLY AND MAINTENANCE

(Tweed/Eden/Kent Litter Bin Range)

Please note: Firexpire is an effective low cost auxiliary device and must never replace primary fire prevention measures. Obstructions preventing the plate dropping may adversely affect the function of the unit, and as many Firexpire devices are used in unsupervised locations, regular inspection and immediate replacement of any damaged or distorted components is essential.

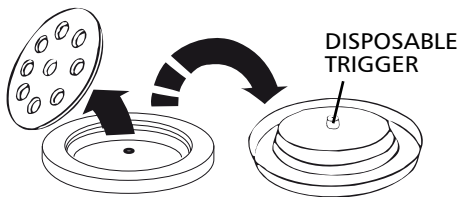
**HOW IT WORKS** The Firexpire system includes three important components.  
 1. Firexpire extinguishing plate 2. Thermoplastic trigger washer 3. Panhead screw



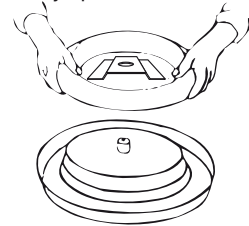
The Firexpire® plate found under the ashtray is held by a thermoplastic trigger. In the event of a fire the trigger will deform and the Firexpire plate will drop on the top of the liner and starve the fire of oxygen. Resetting is simply achieved by REPLACING THE TRIGGER (see below).

## INSTRUCTIONS TO REPLACE TRIGGER IF A FIRE HAS ACTIVATED THE FIREXPIRE PLATE.

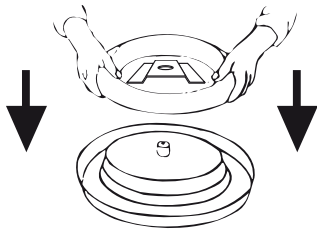
- 1** Remove ashtray cover (if supplied) from ashtray, turn over ashtray and place on to a flat surface. Remove the slotted screw and discard the disposable trigger.



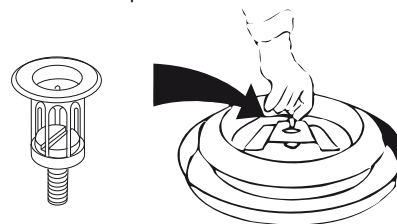
- 2** After first ensuring the Firexpire plate is cool and the contents of the liner compartment have been completely extinguished, remove the Firexpire plate from the bin and turn it the correct way up.



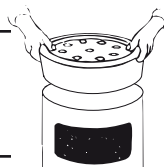
- 3** Holding the plate in both hands, place the centre hole in the Firexpire plate down over the metal spacer.



- 4** Insert screw into a new thermoplastic trigger as shown below. Place screw and trigger through the hole and screw into the metal spacer




- 5** Turn the assembled unit over and replace ashtray with Firexpire attached to the bin unit.



- 6** Replace the ashtray cover into the ashtray (if supplied).

## IMPORTANT CHECK Ensure Firexpire plate is absolutely central before tightening screw.

 **Glasdon®** AND FIREXPIRE® ARE TRADEMARKS OR REGISTERED TRADEMARKS OF GLASDON GROUP OR ITS SUBSIDIARIES IN THE U.K. AND OTHER COUNTRIES

- A planned maintenance schedule of regular inspection is recommended, replacing components as necessary.
- Replacement components are available direct from GLASDON.
- GLASDON cannot be held responsible for claims arising from incorrect installation, unauthorised modifications or misuse of the product.

Issue 2 Date June 2005 Stock no. C000/0183 Page 1 of 1

© Copyright June 2005. Glasdon reserve the right to alter price and specification without prior notice.



**Glasdon®**  
**Glasdon U.K. Limited**  
 Preston New Road  
 BLACKPOOL  
 Lancashire  
 FY4 4UL

Tel: (01253) 600410  
 Fax: (01253) 792558  
 e-mail: sales@glasdon-uk.co.uk  
 web: www.glasdon.com